

Connecting to the Class Server to Turn in Assignments

CSCI E-11

Last updated 02/19/04

Class Folder

We have a class folder on Harvard's "Bigbird" server. This folder contains the following:

- Files for download, including class examples, clip media for possible use in projects, and other tools
- A drop box, for turning in projects

The class folder can be accessed using an "SFTP" client (or program). For information on how to obtain and use an SFTP client, see below. Once you have an SFTP client installed, connect to the class folder using the following information:

- Host address (or Host name): **bigbird.dce.harvard.edu**
- Username: **labuser**
- Password: **53churchst**
- Initial directory (or Path): **cscie11**

Turning in Assignments

You are required to use the class naming convention when turning in assignments. If your name is Jane Smith, your project 1 files should be named as follows:

Smith_J_Proj_1v1.flu
Smith_J_Proj_1v1.swf
Smith_J_Proj_1v1.html
etc.

All the files should go in a folder called:

Smith_J_Proj_1v1

This folder should then be compressed (Zipped or Stuffed). The resulting file should be called:

Smith_J_Proj_1v1.zip

-or-

Smith_J_Proj_1v1.sit

Submit the resulting compressed file by dragging it into the drop box. If you are unsure of how to compress the folder, talk with a TA, or ask at the help desk.

When using the drop box to turn in projects, **you will not be able to delete, rename, or copy over files once they are in the drop box.** Please try to finalize your project before submitting it. However, if you do need to submit a revision, rename the file by adding a new revision number at the end (i.e. **Smith_J_Proj_1v2**). We will grade the highest numbered revision submitted by the due date.

Obtaining an SFTP Client (Windows)

“SecureFX” is available for free from the help desk in 53 Church Street.

If you are a distance student and cannot pick up the free CD, “SecureFX” is also available via free download from Harvard Extension School.

- Visit the link below:
<http://courses.dce.harvard.edu/download>
- Select the “Win32/” link
- When prompted, enter the following username and password:
username: secapps
password: fireh0se (yes, that is a zero)
- Select “sfx213.exe.”

Obtaining an SFTP Client (MAC)

If you do not already have one on your computer, you may download “MacSFTP” free-of-charge from the Harvard Extension School. Do this soon, as the download will only be available for the first part of the semester.

- Visit the link below:

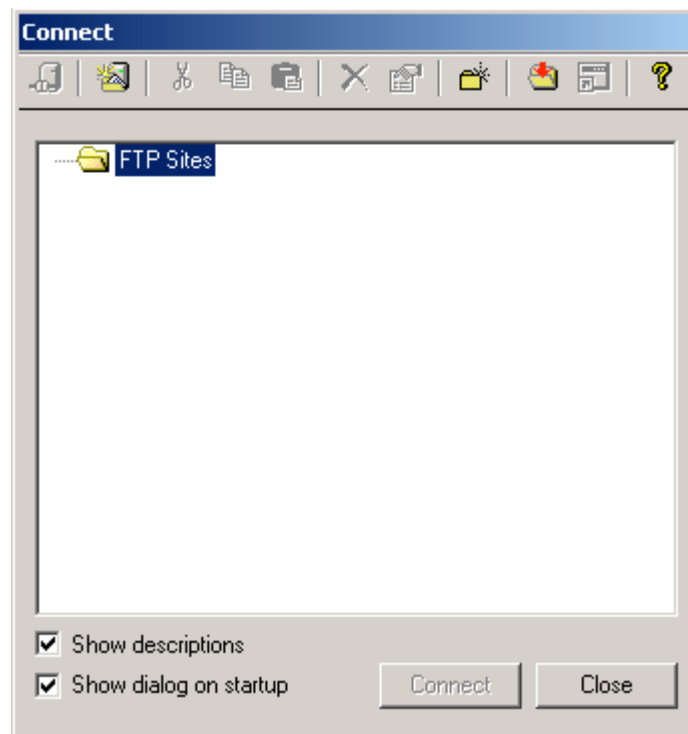
<http://courses.dce.harvard.edu/download>

- Select the “MacOS/” link
- When prompted, enter the following username and password:
username: secapps
password: fireh0se (yes, that is a zero)
- Select the appropriate version of “MacSFTP.” If you have any doubt about which version to pick, view the readme file located in the same directory.

Using SecureFX (Windows SFTP Client)

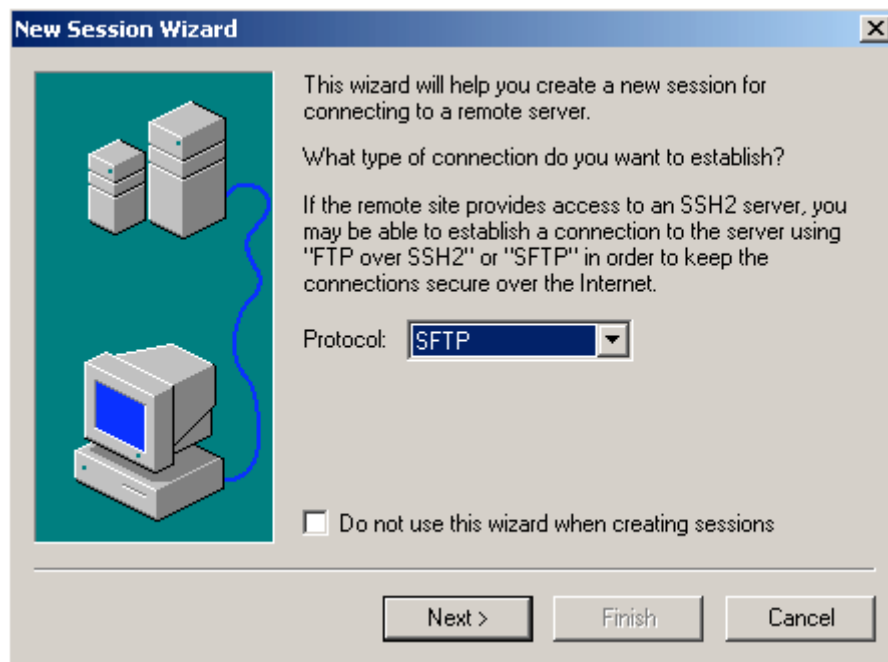
This is intended to be a brief primer to help you connect to the class folder. For more detailed information, consult the documentation that comes with the program.

After installing SecureFX, launch the program, and from the “file” menu, select “Connect.” You will see a window that looks like this:

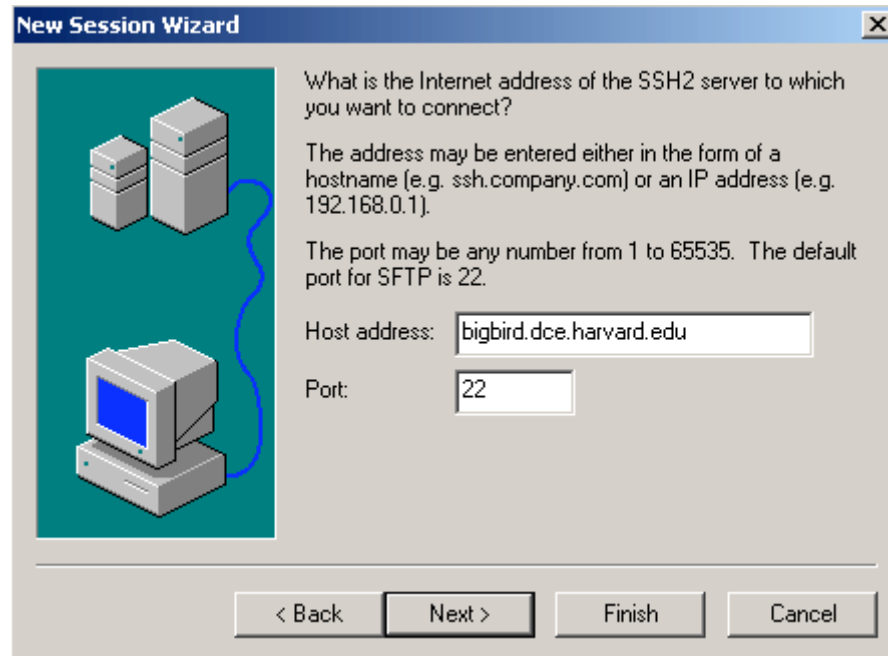


At the top, press the second button from the left to create a new session.

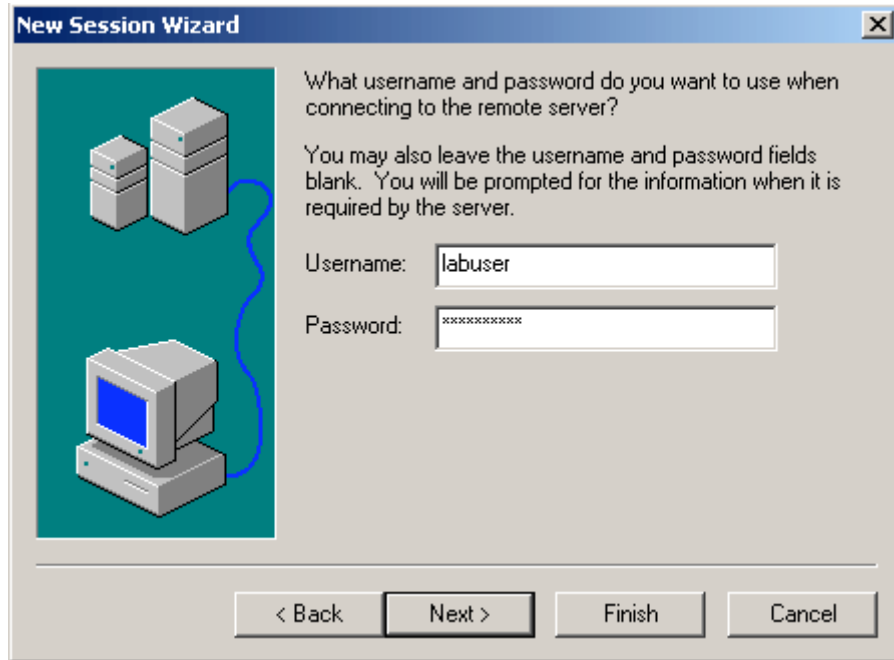
Select “SFTP” as the protocol and click “Next” (see below).



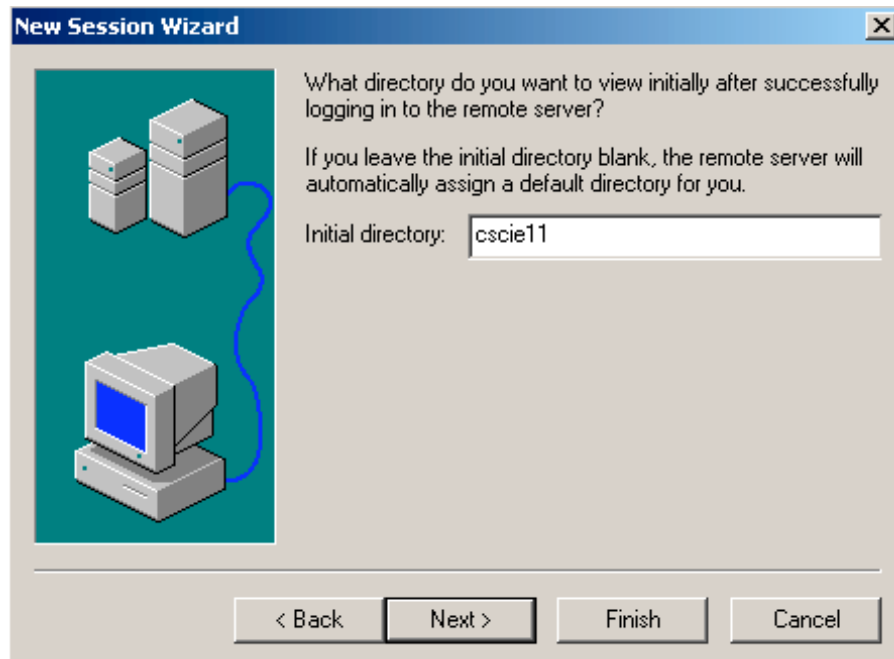
For the host address, type: “bigbird.dce.harvard.edu” and click “Next” (see below).



Enter the username and password found elsewhere in this document and click “Next” (see below).



Enter “cscie11” as the initial directory and click “Next” (see below).



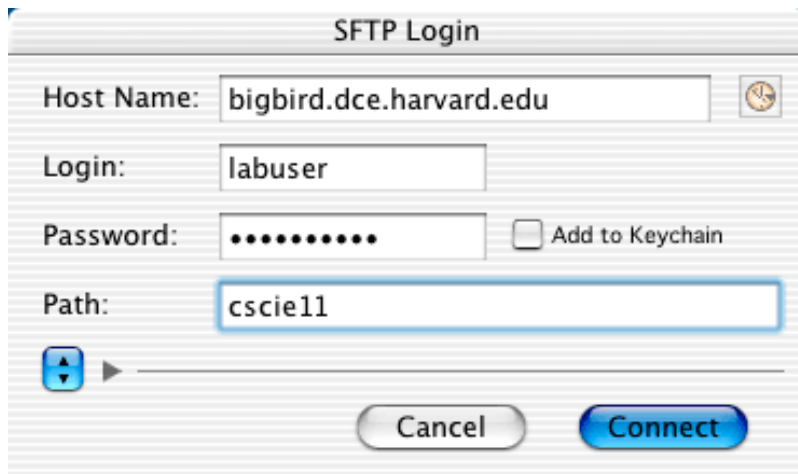
Select “Finish.” Then, with the new entry for “bigbird.dce.harvard.edu” highlighted, select “Connect.”

You may drag zipped assignments to the “Dropbox” folder, or download class examples and other files from other folders by double-clicking on them.

The next time you run “SecureFX,” all you need to do is highlight “bigbird.dce.harvard.edu” and select “Connect.”

Using MacSFTP (Mac SFTP Client)

Launch MacSFTP and type in the required information (see below). For the password, see the first section of this document.



The image shows a screenshot of the "SFTP Login" dialog box. The dialog has a title bar with the text "SFTP Login". Below the title bar, there are four text input fields: "Host Name" containing "bigbird.dce.harvard.edu", "Login" containing "labuser", "Password" containing masked characters (dots) and an "Add to Keychain" checkbox, and "Path" containing "cscie11". At the bottom of the dialog, there are two buttons: "Cancel" and "Connect".

You may drag stuffed assignments to the “Dropbox” folder, or download class examples and other files from other folders by double-clicking on them.